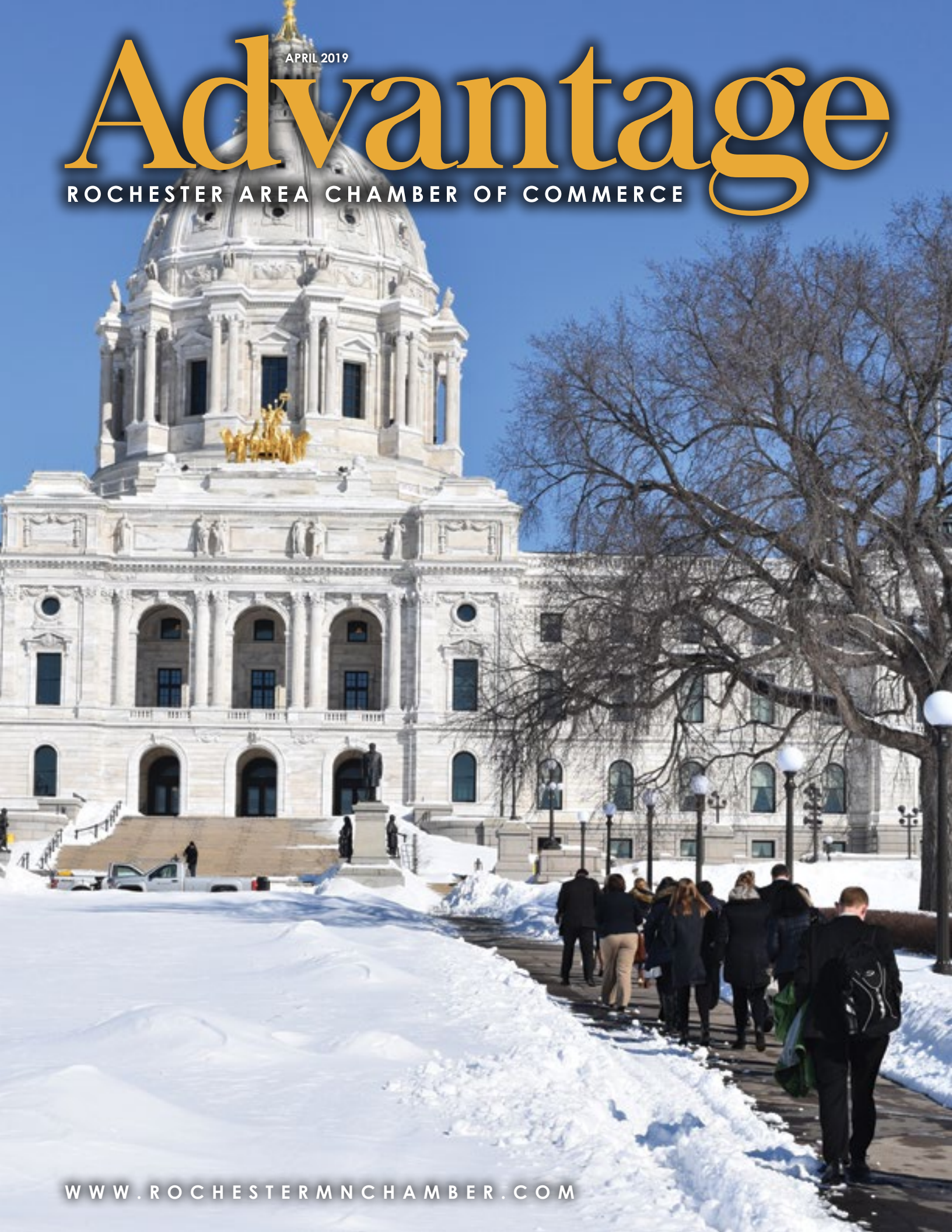


APRIL 2019

# Advantage

ROCHESTER AREA CHAMBER OF COMMERCE



[WWW.ROCHESTERMNCAMBER.COM](http://WWW.ROCHESTERMNCAMBER.COM)



# 2018-2019 Chamber Board OFFICERS

**Chair of the Board** **Greg House**  
House Chevrolet Co.

**Chair Elect** **Aaron Benike**  
Benike Construction

**Treasurer** **Mike Busch**  
Paramark Corp.

**Secretary** **Emily Benner**  
Preventice

**Chamber President** **Kathleen Harrington**

# MEMBERS

**Audrey Betcher** Individual Membership

**Charlie Brannon** Charlie's Eatery & Pub

**Jonathan Buck** Five West/Loop

**Dr. Lori Carrell** University of Minnesota Rochester

**John Eckerman** Individual Membership

**Jessica Eidem** IBM

**Cathy Fraser** Mayo Clinic

**Greg Griffiths** Dunlap & Seeger, P.A.

**Lizzy Haywood\*** People's Food Cooperative

**Kevin Higgins** Olmsted Medical Center

**James Kelly\*** Construction Partnership Inc.

**Samuel Kwainoe** Farmers Insurance

**Sarah Miller** White Space, Inc.

**Matt Morehead** Carlson Capital Management

**Michael Muñoz** Rochester Public Schools

**Ryan Nolander** Rochester Area Economic Development, Inc.

**Nate Nordstrom** BrandHoot

**Joselyn Raymundo** Rochester Home Infusion

**John Reed\*** Rochester Airport Co.

**Myron Salz \*** Centerstone Plaza Hotel Soldiers Field

**Rolf Thompson** National Eagle Center

**Therese White** Think Mutual Bank

\*Denotes at large members of the Executive Committee

## MISSION

The Chamber promotes business success which supports a thriving community.

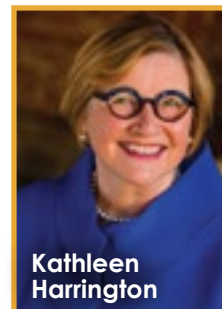
## VISION

Rochester-area businesses are empowered to succeed in a diverse and collaborative climate.

## VALUES

As a service organization, the Chamber is committed to conducting our work in accordance with the following values:

**Collaboration | Diversity | Innovation  
Integrity | Proactivity**



**Kathleen  
Harrington**

**PRESIDENT**  
507-288-1122



**Matt  
Bissonette**

**VICE PRESIDENT**  
507-424-5683



**Sam  
Gill**

**WORKFORCE DEVELOPMENT  
MANAGER**  
507-424-5687



**Kyle  
Hoffman**

**MEMBER SERVICES  
ASSISTANT**



**Sara  
Johnson**

**RECEPTIONIST**  
507-288-1122



**Cheryl  
Krage**

**BUSINESS MANAGER**  
507-424-5699



**Nick  
Reihemeier**

**MEMBER SERVICES  
COORDINATOR**  
507-424-5670



**Mike  
Schnell**

**GOVERNMENT  
AFFAIRS MANAGER**  
507-424-5666



**Tim  
Shea**

**DIRECTOR OF SALES  
AND DEVELOPMENT**  
507-424-5663

# Annual Member And Community Celebration

ROCHESTER AREA CHAMBER OF COMMERCE

<i>April</i> <b>12</b>	<i>Time</i> <b>6:00pm</b>
<i>Hilton Rochester Mayo Clinic Area</i>	
<i>Table</i> <b>\$600</b>	<i>Individual Ticket</i> <b>\$50</b>

You are invited to attend the Rochester Area Chamber's **Annual Member and Community Celebration.**

Join us as we see the inside of the new **Hilton Rochester Mayo Clinic Area** hotel for the first time and enjoy an evening of great food, entertainment, and networking.

**This party will be short on speeches and long on fun!**

**REGISTER NOW!**

**<http://bit.ly/raccAMC>**

or call (507) 288 - 1122

## SPONSORS





# Calendar of Events

April 5

SHOP LOCAL FIRST SERIES

Location125 Live  
125 Elton Hills Dr NW

Time11:30 am - 1:00 pm

SponsorSpectrum Reach

April 12

ANNUAL MEMBER CELEBRATION

LocationHilton Rochester – Mayo Clinic Area  
10 E Center St

Time6:00 - 11:00 pm

SponsorsWells Fargo, Mayo Clinic, Olmsted Medical Center, HGA, Rochester International Airport, Destination Medical Center

April 16

MEMBER ORIENTATION

Location125 Live  
125 Elton Hills Dr NW

Time8:00 - 9:00 am

Sponsors125 Live, Sam's Club

April 18

BUSINESS AFTER HOURS

LocationAltra Federal Credit Union  
3833 Cascade Creek Rd NW

Time5:00 - 7:00 pm

SponsorAltra Federal Credit Union

April 19

WOMEN'S ROUND TABLE

LocationJaguar Communications Video Conference Center  
220 South Broadway, Suite 100

Time7:30 - 9:00 am

SponsorsMayo Clinic, Think Bank

April 19

2019 LEGISLATIVE PREVIEW

LocationRochester Golf & Country Club  
3100 Country Club Rd SW

Time7:30 - 9:00 am

SponsorWest Bank

May 3

AM ESPRESSO

LocationHaley Comfort Systems  
4320 US Highway 52 N

Time7:30 - 9:00 am

SponsorHaley Comfort Systems

NEW CHAMBER SERVICE!

Our community offers a number of different classes and workshops to assist small business in a variety of ways. The Chamber will now inventory and curate these opportunities for your convenient review. See pages 5 and 6 for a full list.

A special Thank You to this month's COMMUNITY BUILDERS

Shop Local First Series

Join the Rochester Chamber for a Lunch & Learn on how data is the new currency that will keep your customers shopping locally first.

April 5, 2019  
11:30 a.m.-1:00 p.m.  
125 Live, 125 Elton Hills Drive, Rochester, MN 55901.

Register to attend by clicking this ad.

Spectrum REACH

## Chamber Continues Shop Local First Campaign

### Launch of Phase 2 – April 5th 11:30-1 p.m. 125 Live

The Chamber is continuing its Shop Local First Campaign in a variety of ways. The first session, in partnership with Spectrum Reach, will be quarterly “Lunch and Learn” sessions focused on ways to increase your local customer traffic, engagement and loyalty. Each session will be a hour and a half of instruction with time for discussion and Q & A. Lunch will be provided. All sessions will be held at 125 Live at no cost to you. Please go to the Chamber website to register.

Since shopping doesn’t stop once the holidays are over, neither does the Chamber’s Shop Local First Campaign. We urge you to proudly display your Shop Local First poster to remind your customers and would be customers that Shopping Local First helps build a stronger community. If you want or need additional posters, please stop by or contact the Chamber at 507-288-1122.

Shop Local First

SUPPORTED BY THE ROCHESTER AREA CHAMBER OF COMMERCE

Women’s Round Table

Co-chaired by Zoey Jantsan, realtor and entrepreneur, and Jennifer Teske of the United Way, the Women's Round Table is a very popular program at the Chamber. Focused on women's professional and leadership development, each month brings different speakers, focus, and invaluable time for networking and small group discussion. April's speaker is Rev. Emily Carlson, Lutheran Pastor, Director of Communications for the Southeastern MN Synod of the Evangelical Lutheran Church and Post Bulletin weekly column author of “Holy Everything.” No registration is required. If you haven't attended a round table–check one out. Great content, great networking and opportunity for civic engagement.

Rev. Emily CarlsonJennifer TeskeZoey Jantsan



# Opportunities to Increase Your Personal or Organizational Effectiveness

## SCORE: Leveraging Technology to Market Your Business

**Location:** Merchants Bank (3586 55th St NW)  
**Date/Time:** Tuesday, May 7, 2019, 10:45am-12:00pm  
**Cost:** \$10  
**Details:** Leveraging Technology to market your business through digital marketing like Facebook, Twitter, Instagram, LinkedIn, Pinterest, YouTube. We will also cover Search Engine Optimization, SEO and event and email marketing.

## Business Expert Series Deep Dive: Essential Sales Skills - Shortening the Buyer Journey

**Location:** WSU-Rochester (400 S Broadway, Ste 300)  
**Date/Time:** Thursday, May 9, 2019, 1:00pm-3:30pm  
**Cost:** \$50  
**Details:** Learn about factors influencing how buying decisions are made, techniques to uncover buyer needs and how to improve your ability to successfully communicate that value to the buyer. This program will benefit both new and experienced sales professionals who want to improve their ability to effectively communicate value and to develop stronger relationships with their customers.

## SCORE: Women's Round-Table - Marketing Strategies and Tools

**Location:** Cambria (400 S Broadway)  
**Date/Time:** Tuesday, April 30, 2019, 5pm-6:30 pm  
**Cost:** \$10  
**Details:** Join us to learn marketing strategies and tools from a panel of experts and small group discussions. You will discover who needs your product or service and the many social media platforms they are using. We will help you turn your followers, subscribers, acquaintances, and friends into a buyer.

## Microsoft Excel Training - Advanced

**Location:** RCTC Heintz Center, Room HC109  
**Date/Time:** Tuesday, April 9, 8:30am-12:30pm  
**Cost:** \$99  
**Details:** Maximize the Excel program by learning tips and techniques in this course. You will discover how to create pivot tables and macros to filter and summarize data quickly and easily. This course will also go into advance functions and formulas. You will learn how to maximize Excel to conduct data analysis.

## RCTC - Administrative Professionals Conference

**Location:** RCTC Heintz Center, Room HB117  
**Date/Time:** Wednesday, April 17, 8:15am – 4:45pm  
**Cost:** \$125  
**Details:** This conference is geared towards celebrating the role of an Administrative Professional. The day is set up as an opportunity to re-energize yourself while gaining new skills and techniques to assist you in playing a vital role in the success of your organization. This conference will provide you an opportunity to network with the other professionals while attending educational sessions that relate directly to your position.

## EquityLogic Series Common Language: Communicating with Respect; Gender Equity and Respect

**Location:** Woodlake Meeting Center (210 Woodlake Dr)  
**Date/Time:** Tuesday, May 14, 2019, 8:00 AM-10:00 AM  
**Cost:** \$40  
**Details:** This session presents values-based interactive training that develops norms for communication and increases awareness of barriers to interpersonal connectivity. Activities include exploring intent versus impact, the ladder of inference, and reflective listening. In addition, this session provides a learning piece on gender equity and gender respect in the workplace.

# MINNESOTA SMALL BUSINESS DEVELOPMENT CENTERS SOUTHEAST REGION

SBDC offers **FREE** educational and confidential business consulting services for operational success at all life cycle stages of a small business.

Services are offered by experienced business and subject matter experts including:

- Access to Capital and Loan Packaging
- Financial Analysis and Assessment
- Accounting Systems and Literacy
- Marketing and Research
- Marketing Plan Development
- Feasibility Analysis
- Startup Assistance
- Business Plan Development
- Electronic Commerce/Web site Development
- Succession and Strategic Planning



**OPEN 22**  
NEW BUSINESSES CREATED

**503**  
JOBS CREATED AND SAVED

**\$24.7**  
NEW BUSINESSES CREATED

**ENTREPRENEURS AND BUSINESSES SERVED**  
**385**

**BUSINESS REVENUE INCREASED**  
**\$10.1M**

**TOTAL HOURS OF CONSULTING SERVICES**  
**2,889**

## SPOTLIGHT ON: Real Deal Home Decor, Rochester MN



Ashley Moberg went on a girls' weekend getaway 3 years ago, and she had her first experience at a Real Deals. Immediately upon walking in she had the warm fuzzies and for the next 3 years, she talked about how she wanted to open a Real Deals in Rochester!

Moving forward with her idea of starting her own business, Ashley contacted the Real Deals franchise and received all the information from them. The franchise told her that she needed a business plan to submit to them along with a letter from her banker stating that they would loan the money to start her business. Several of the bankers she visited recommended that she meet with the Small Business Development Center (SBDC) to help her with her business plan and help her package a Small Business Administration (SBA) loan.

Two months later, she opened her doors and the business continues to grow. Her store products range from home décor, women's clothing, unique nick knacks, jewelry, accent furniture, and so much more! She has an online boutique and uses Facebook live to show off her various products.

*"The SBDC helped get this whole business started! They led me step by step to make this dream a reality."*





# City of Rochester Launches Online Engagement Tool

In March 2019, the City of Rochester launched Polco, an innovative engagement platform where residents can directly **provide input** to the local government decision-making process.

City Administrator, Steve Rymer states, "The use of Polco is reflective of the City's commitment to **diversifying engagement** tools, specifically through the use of **innovative** technology. Over the next year, we will work to get community members signed up and using Polco, **while utilizing other channels as well.**"



## More participation.

Make it possible for busy and thoughtful residents who struggle to attend in-person events to provide meaningful input through improved accessibility.



## Good government.

Better transparency and structured communication delivers better community connectivity, buy in, and resiliency.



Polco's civic engagement tool improves how city teammates and residents communicate. Polco delivers the **ease and accessibility** of an online survey combined with the verification and reliability of in-person engagement.

Rochester residents begin giving input by downloading the Polco app for Android or iOS, or by visiting <https://polco.us/> and creating an account. Polco's platform is available via web, mobile app, email, and any place Polco e-ballots are found online. This **service is free** to all Rochester residents.



## Get Engaged Today!

<https://polco.us/rochestermn>



FOR YOUTH DEVELOPMENT®  
FOR HEALTHY LIVING  
FOR SOCIAL RESPONSIBILITY

## YMCA RESPONDS TO COMMUNITY CHILD CARE NEEDS

**February 2019** The Y welcomed over 45 families to their open house on Saturday, February 9. The new Early Childhood Learning Center, located near Lourdes High School on 2364 Valley High Dr. NW, offers full-day child care for kids ages 6 weeks to 5 years.

Families had the opportunity to take guided tours of the center, meet staff and beloved Y mascot Sneakers, and learn more how the Y supports families to learn, grow, and thrive.

"I am proud to be a part of a team that offers families quality child care focused on learning through play. Our goal is to provide kids with experiences and guidance that nurtures their individuality and supports lifelong learning as they grow," said Abrina Trom, program director for the Rochester Early Childhood Learning Center.

Designed with kids in mind, the bright, colorful classrooms are equipped with interactive whiteboards to accommodate curiosity and any learning style. Learning through play is easy in creative spaces that stimulate a child's social emotional growth.

The new Early Childhood Learning Center opened Monday, March 4 and is enrolling in their infant, toddler, preschool and Pre-K classrooms. The Y offers need-based scholarships for tuition and Y membership is not required to enroll.

The Y's early childhood learning programs have earned national accreditation by the National Association for the Education of Young Children, a 4-Star Parent Aware rating and are licensed by the State of Minnesota.

To learn more, visit [ymcamn.org/rochestereclc](http://ymcamn.org/rochestereclc) or call 507-200-4024.





# DAY AT THE CAPITOL

This year's Day at the Capitol resulted in both collective impact for our region and personal impact for each of the 125 Chamber member participants, the Leadership Greater Rochester cohort, and the high school students from Byron, Mayo and Lourdes. The day was packed with action ranging from small group meetings with key committee leaders to a rousing rally led by KTTC's Caitlin Alexander and Matt Benz that included the Rochester area elected delegation. Attendees were also able to meet with Minnesota Department of Transportation Commissioner Margaret Anderson Kelliher and have an exclusive meeting with Governor Walz. You can see the entire program at <https://www.rochestermnchamber.com/advocacy-resources>. Thank you to all the DAC participants for making a difference for our region!

## 01 ADVOCACY TRAINING



More than 120 Day at the Capitol attendees kicked off their morning with a facilitated conversation about advocacy and best practices.

## 02 TRAVEL



The attendees arrived to the Capitol bright and early thanks to the efficient and comfortable transportation provided by Rochester City Lines.

## 03 COMMISSIONER KELLIHER



Attendees received an exclusive meeting with MnDOT Commissioner Margaret Anderson Kelliher and heard about the Governor's transportation priorities for 2019.

## 04 MEETING LEGISLATORS



DMC Executive Director Lisa Clarke (middle) meeting with Representative Duane Sauke (25B). More than 25 legislator meetings were scheduled for DAC attendees.

“DAC was very productive and provided me the opportunity to have time with key legislators and executive branch leaders, including Governor Walz and MNDOT Commissioner Anderson Kelliher, all of whom directly impact the future of our airport. Day at the Capitol was well organized and very valuable for me and other attendees. —John Reed, Executive Director, Rochester Airport Company”

## 05 RALLY IN THE ROTUNDA



Attendees participated in a rally led by Caitlin Alexander and Matt Benz from KTTC.

## 06 SENATE CHAMBER



DAC attendees gained access to the MN Senate Chamber and spoke with Sen. Carla Nelson about civic service and engagement.

## Thank You To Our Sponsors

**PLATINUM:** City of Rochester, Mayo Clinic

**SILVER:** BBA Aviation, Rochester International Airport, Signature Flight Support

**BRONZE:** Allegra Marketing Print Mail, Bolton & Menk, DMC, Rochester City Lines, Rochester Community and Technical College, Southern Minnesota Municipal Power Agency, Winona State University Rochester

**MEDIA SPONSOR:** KTTC

**BOOSTER:** Minnesota Energy Resources, People's Energy Cooperative, RSP, Wells Fargo,

## 07 MEETING WITH GOVERNOR



Governor Tim Walz spent a considerable amount of time answering questions and talking with the group about critical economic issues.



# Eggs & Issues: State Budget Insights

Chamber members gathered on Friday, February 22 to connect with Minnesota Management & Budget Commissioner Myron Franz, and listen to him present on the Governor's budget plan, mere days after its initial release.

Attendees had the opportunity to ask specific questions of the Commissioner and witness a dialogue between Franz and State Elected Officials from the region.

Contact Mike Schnell, Government Affairs Manager, [mschnell@rochestermnchamber.com](mailto:mschnell@rochestermnchamber.com) for more information.



## HUBSOURCE UPDATE

# Layer Your Hiring Strategy

## What does it mean? Why should you do it?

Whether or not someone is looking for a job, they may see information about your company. When your company is looking to hire workers make sure to layer your hiring strategy. In other words, make sure that your posting – whether is an ad for a job or some news about your organization – is visible on multiple channels. For example, once your organization posts a job, you should also include that link on Facebook, Twitter, and Instagram. One and done is not sufficient.

Hubsource makes it easy for employers to do this – to layer – your job postings by including social media links right on your company profile. Once you post a job on Hubsource, you can easily share the job to your various social media channels, expanding its presence and driving more candidates to apply.

Do you have questions about integrating social media into your recruitment strategy? Are you wondering about other strategies for layering your hiring process? Contact Sam Gill, Workforce Development Manager, by emailing [sgill@rochestermnchamber.com](mailto:sgill@rochestermnchamber.com).



**LOCALLY OWNED • LOCALLY MANAGED • LOCAL DECISIONS**

**Bank on ONB...**

**For your personal and business banking needs.**

**ONB BANK**

(507) 280-0621  
[www.bankonONB.com](http://www.bankonONB.com)

**COMING SOON TO STEWARTVILLE!**

# AMBASSADORS CELEBRATING CHAMBER MEMBERS

The Rochester Area Chamber of Commerce is happy to welcome the following businesses, who are investing in our community, celebrating a new location, new ownership, major renovations, or anniversaries. Reach out to your fellow Chamber members to congratulate, introduce yourself, and or offer your business services.

## Expansion



### 01 Allegra Printing

(507) 282-6112 | [www.allegrarochestermn.com](http://www.allegrarochestermn.com)

## Groundbreaking



### 02 Heartland Gun Club

(651) 242-2064 | [www.heartlandgunclubs.com](http://www.heartlandgunclubs.com)

## New Location



### 03 Lutheran Social Services

(800) 582-5260 | [www.lssmn.org](http://www.lssmn.org)

## Grand Opening



### 04 Med City Animal Hospital

(507) 258-9011 | [www.medcityanimalhospital.com](http://www.medcityanimalhospital.com)

## Groundbreaking



### 05 Real Estate Equities

(651) 389-3817 | [www.reeapartments.com](http://www.reeapartments.com)

## Grand Opening



### 06 Rochester Community Pharmacy

(507) 322-6124 | [rochester-community-pharmacy.business.site](http://rochester-community-pharmacy.business.site)





## 07 Rochester Public Schools & Mayo Clinic

(507) 538-3000 | [www.rochester.k12.mn.us](http://www.rochester.k12.mn.us)  
(507) 293-2622 | [www.mayo.edu](http://www.mayo.edu)

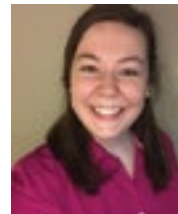
## Energy rebates for your business.

The smart move for your bottom line.



[minnesotaenergyresources.com](http://minnesotaenergyresources.com)  
866-872-0052

## NEWSREELS



### Healing Rhythms Music Therapy, LLC

[www.healingrhythmsmt.com/](http://www.healingrhythmsmt.com/)

**Siobhan Kelley**, MT-BC, joined the Healing Rhythms team in December as our newest Board-Certified Music Therapist. She is a graduate of Southern Methodist University in Dallas, TX, her hometown, with a Bachelor of Music Degree in Music Therapy. Siobhan developed a passion for medical music therapy and has joined our team to provide music therapy services for adult palliative care patients, pediatrics, and is taking appointments for children and adults with disabilities in our clinic. Join us in giving Siobhan a warm Minnesota welcome to our community!



### PrairieCare Medical Group

[www.prairie-care.com](http://www.prairie-care.com)

The PrairieCare Medical Group (PCMG) Southern MN recently hired **Dr. Christopher Sola** to lead the expansion of adult care services in Rochester and Mankato. Dr. Sola is a nationally recognized, board-certified adult psychiatrist with a history of collaboration and leadership that has earned him numerous awards. Trained at Mayo Clinic, he served in numerous leadership positions in adult psychiatry at Mayo including Medical Director of the Inpatient Medical Psychiatry unit. He also worked at the Cleveland Clinic. Dr. Christopher Wall, Founder of PCMG Southern MN notes, "I've known Dr. Sola and have followed his work for nearly two decades. I am thrilled that he is willing to bring his spirit of innovation and teamwork to our adult mental healthcare landscape. We believe Dr. Sola will lead our teams to develop new approaches to complement existing community services." The new Rochester building is located at 5255 Members Parkway NW off of West Circle Drive.

## WELCOME TO OUR MEMBERS

Thank you for your investment in our community.

### Ed-Ventures, Inc.

[www.ed-ventures.com](http://www.ed-ventures.com)  
(507) 289-3332



Ed-Ventures offers customized tour itineraries for adult tour groups, student tour groups, mission groups, and faith-based tour groups that are fully escorted and highly inclusive. With over 100 years of collective experience creating tours, our team has gained the skills and earned a reputation for delivering top-notch, personalized tours to destinations around the world.

### Salient Oils

[www.salientoils.com](http://www.salientoils.com)  
(507) 319-5752



Salient oils is a family owned company that supplies essential oils and hemp oil products for a more holistic approach to your health and wellness needs. We have over 80 unique essential oils, as well as all natural skincare products.

### Simple Home Method

[www.simplehomemethod.com](http://www.simplehomemethod.com)  
(507) 206-0679



Simple Home Method offers home organization services to help clients create homes filled with belongings they love, enabling them to make lasting change and live their ideal lives. Simple Home Method specializes in KonMari, the best-in-class tidying method developed by Marie Kondo and made famous by her best-selling book, "The Life-Changing Magic of Tidying Up," and the companion Netflix show, "Tidying Up with Marie Kondo." Over one or more sessions, Simple Home Method teaches clients how to make decisions about what to keep, recycle, toss, or donate. Clients learn how to simplify, organize, and store the items they keep, so that they can maintain an organized home forever.

### The Maven on Broadway

[www.berkshirecommunities.com](http://www.berkshirecommunities.com)  
(507) 218-2890



Introducing The Maven on Broadway, Downtown Rochester's preeminent new residences located in an unrivaled waterfront setting across from the Zumbro River, steps from Skyway access to The Mayo Clinic. Sophisticated alcove, one and two-bedroom, and penthouse residences are seamlessly designed with sleek, carefully chosen finishes to create your Luxury Launchpad. We invite you to experience the new benchmark of luxury living in Rochester, The Maven on Broadway.

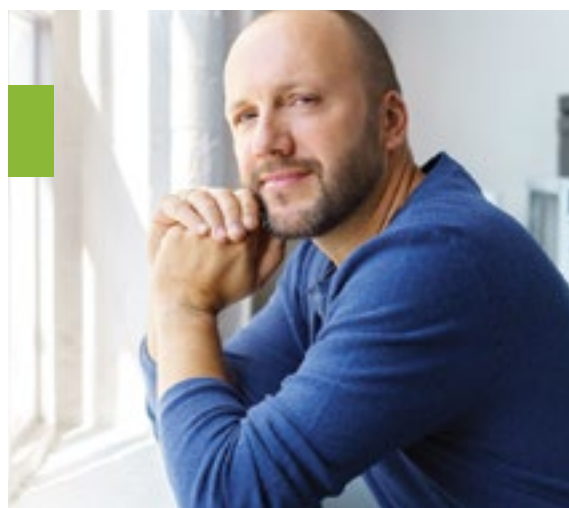
## RENEWING MEMBERS

Thank you for your continued investment in our community.

AAA Insurance  
Allegra  
Audrey Betcher  
Bisbee Income Tax Service  
Boy Scouts of America – Gamehaven Council  
Brauer Roofing Inc.  
Canteen Vending Rochester  
Culligan Water of Rochester  
Domaille Engineering, LLC  
Econo Lodge  
Endres Window Cleaning

Farmers Insurance –  
Jill Fasbender Agency  
Flaherty & Hood, P.A.  
Fortress Insurance & Financial Services  
Gerard A. Goulet – Long-Term Care Insurance Specialist  
Health -N- Healing  
Hermitage Farm Center for Healing  
High Forest Bobcat Service, Inc.  
Hirshfield's Decorating Center  
Implant & Periodontal Professionals  
Integrated Technology Engineering  
Junge's Flooring  
Knutson Construction Services  
Rochester, Inc.  
Kruse Lumber Co.  
Logic of English  
Mantorville Economic Development Authority  
Meadow View Veterinary Clinic  
MN Adult & Teen Challenge

Olmsted Financial Group  
Pure Rock Studios of Rochester, LLC  
Rochesterfest  
Ronald McDonald House  
Ryan & Grinde, LTD  
Sam's Club  
Seeds of Wisdom  
Service Pros Plumbing & Heating  
Sexton Public Affairs, LLC  
SLR Computers  
Southern Woods Townhome Association  
Steve Gentry Construction  
Tech Doctors  
The Brittany's of Rochester, LLC  
Trademark Uniforms, Inc.  
Velair Property Management  
Viking Electric Supply  
Volunteers of America @ High Pointe  
Watson Recycling  
Zumbro Valley Health Center



## Business banking as it should be.

Advice you can trust.  
Lending with local decision makers.  
Cash management & more.

[thinkbank.com](http://thinkbank.com) | 507-288-3425  
Member FDIC

**Think**  
MUTUAL BANK



ROCHESTER AREA

CHAMBER OF COMMERCE

220 South Broadway, Suite 100

Rochester, MN 55904

507-288-1122

[www.RochesterMNChamber.com](http://www.RochesterMNChamber.com)

Periodical

Postage

PAID

Rochester, MN

PLEASE SHARE THE **Advantage**  
Route around your office.

# A FAMILIAR FACE AT A BANK YOU'LL LOVE

Grow, Preserve and Transfer Your Assets

“MY GOAL IS FOR YOU TO MEET YOURS —

*With years of experience in the areas of wills, trusts, estate planning and probate, I enjoy working with individuals, families, business owners and foundations, helping them see what is possible when it comes to their financial future and then putting a plan in place to reach those goals.*

”



**Masood Dehnavifar, J.D.**  
Trust Department Manager

**We can help with:**

- Investment Management
- 401(k) and other Qualified Plan Administration for Employers
- Retirement Solutions
- Business and Farm Succession Planning
- Serve as Trustee for Revocable, Irrevocable, Charitable, Special Needs or Insurance Trusts
- Probate and Estate Administration
- Daily Finance Management under a Power of Attorney
- Estate Plan Counseling

Put our Trust experts to work for you and discover the Merchants Bank difference.

 **Merchants**  
*Bank*